

WithersRavenel Leads the Charge on the East Coast's Largest Land Development Endeavor

Chatham Park is a 7,100-acre Master Planned community that is approved for up to 22,000 residential units and 22 million square feet of non-residential space located in the Town of Pittsboro just 30 miles west of Raleigh, NC. It is the largest land development project on the East Coast, with WithersRavenel providing planning, engineering, and landscape architecture services.

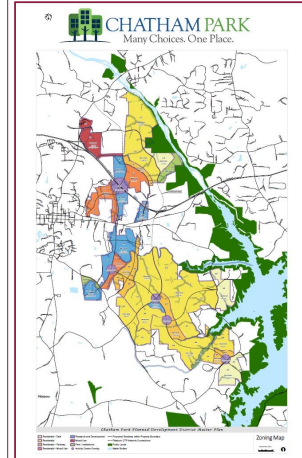
The developers envision 27 types of houses, from sleek condominiums overlooking shops and restaurants in the heart of a village center to cozy single-family homes nestled along a scenic nature preserve along with a collection of boutiques, fine dining, top-notch schools and corporate business parks.

Office and commercial spaces have been constructed and the first phase of residential living, the Vineyards, is underway; the 300-acre community will consist of 850 residential units with a mix of cottages, townhomes, several single-family products, and apartments. In addition, a 10-acre Town Park is proposed along with a 16-acre private K-12 school campus, all seamlessly connected by over 11 miles of greenways, multi-use trails, and sidewalks.

edited by Kelly Shayne Young

Roadway design will incorporate Complete Street concepts including dedicated bike lanes and innovative low-impact development elements. At the heart of the Vineyards and one of the first residential phases to be developed is the Cottages, a 4-acre site consisting of 30 detached homes ranging from 850 – 1,200 square feet clustered together around preserved and developed open/gathering spaces.

WithersRavenel is the lead designer for public and private development projects within Chatham Park, coordinating with many regulatory agencies and other engineering firms. As part of the project's commitment to sustainability and innovation, WithersRavenel has worked with the developers to plan for a more sustainable community by developing and implementing practices that protect the environment and create a better place to work, live, and play. An example of this would be the innovative overall watershed health program. Further, Chatham Park is the first privately funded pilot project in North Carolina for the design and construction of a new alignment using green street installation.



With up to 22,000 residential units and 22 million square feet of non-residential space, Chatham Park's 7,100 acres of housing, boutiques, fine dining, top-notch schools, and corporate business parks merge into the East Coast's largest land development venture.